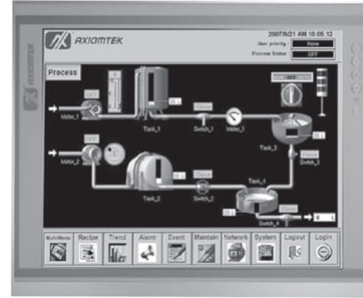


P1177S-881

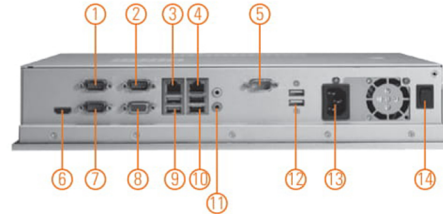
17" SXGA TFT Slim Industrial Touch Panel Computer with 4th Gen Intel® Core™ i7/i5/i3, Celeron® & Pentium® Processor

Features

- 17" SXGA TFT LCD display
- LGA1150 socket 4th gen Intel® Core™ i7/i5/i3, Celeron® & Pentium® processor (Broadwell/Haswell)
- Intel® H81 chipset
- Less screw design for easy installation
- 2 USB 3.0, 4 USB 2.0 and 4 COM ports
- Built-in speakers and optional Wi-Fi 802.11 b/g/n module
- Robust aluminum with IP65 compliant front bezel design
- The best C/P ratio for HMI solution



▲ Side view



1. COM 1 with 5V & 12V (RS-232/422/485)
2. COM 3 with 5V & 12V (RS-232/422/485)
3. LAN 1 (RJ-45 for Gigabit Ethernet)
4. LAN 2 (RJ-45 for Gigabit Ethernet)
5. COM 4 with 5V & 12V (RS-232)
6. HDMI x 1
7. COM 4 with 5V & 12V (RS-232/422/485)
8. VGA x 1
9. USB 3.0 x 2
10. USB 2.0 x 2
11. Mic-in x 1, Line-out x 1
12. USB 2.0 x 2
13. AC Plug x 1
14. Switch for power on/off x 1



Introduction

The P1177S-881 is a multimedia 17" touch panel PC for kiosk application. It has a fashionable mechanism design and industrial-grade material front bezel which can avoid damage from chemical corrosion. To meet the demands of multimedia application, the P1177S-881 is powered by a high performance LGA1150 socket 4th generation Intel® Core™ i7/i5/i3, Celeron® & Pentium® processor with the Intel® H81 Express chipset (Broadwell/Haswell). It features four COM ports, two Gigabit Ethernet and up to 16 GB memory of dual-channel DDR3 that delivers high computing capability for high performance-demanding applications. The industrial panel PC is most suitable for kiosk, factory and automation.

Dual Monitor Display

If larger viewing area is desired, an additional display can be connected via the system's VGA or HDMI port to help enhance worker's productivity level.

Speaker and WLAN Antenna Supported

The P1177S-881 features built-in speakers for kiosk application to display multimedia content program. It also supports WLAN module antenna (optional) for wireless network connectivity.

Friendly Less Screw Design

The P1177S-881 is designed with ease of maintenance in mind. There are only three screws on the back chassis, so that technicians can quickly remove the system's back cover with minimum effort.

Specifications

Front Bezel	Aluminum with IP65/NEMA 4 rugged protection	
LCD Panel	Display Type	17" SXGA TFT LCD
	Brightness	250 nits
	Resolution	1280 x 1024 pixels
	Viewing Angle	170°/160°
Main System	CPU	LGA1150 socket 4th generation Intel® Core™ i7/i5/i3, Celeron® & Pentium® processor (Broadwell/Haswell)
	Chipset	Intel® H81
	System Memory	2 x 204-pin DDR3-1333/1600 SO-DIMM, up to 16GB
	BIOS	AMI UEFI BIOS with OA 3.0 built
	Storage	1 x 3.5" or 2 x 2.5" 7/9.5 mm SATA HDD
	Watchdog Timer	255 levels, 1 to 255 sec.

Updated Mar. 11, 2019. * All specifications and photos are subject to change without notice.

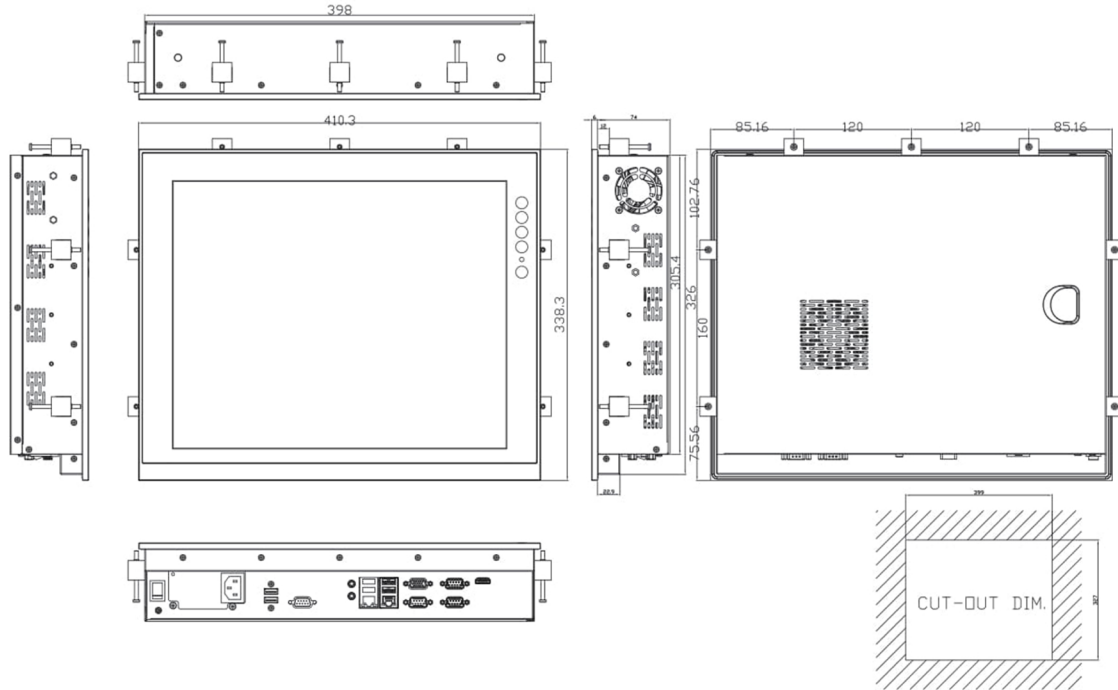
Specifications

IO Connector	3 x RS-232/422/485 with 5V & 12V 1 x RS-232 with 5V & 12V 1 x VGA 1 x HDMI 2 x USB 3.0 4 x USB 2.0 2 x 10/100/1000 Mbps Ethernet (Intel® i217-V & i210-AT) 1 x Audio (Mic-in/Line-out)
TPM	N/A
Expansion Interface	N/A
Touchscreen	5-wire resistive type Light transmission 79% 1 million activations (typical) at a single point
Power Supply	100 to 240 VAC, 200W
Power Consumption	142W
Dimensions	410 mm (16.14") (W) x 80 mm (3.15") (D) x 338 mm (13.3") (H)
Packing Dimension	610 mm (24.02") (W) x 260 mm (10.24") (D) x 590 mm (23.23") (H)
Weight (net/gross)	6.6kg (14.55lb) / 10.6kg (23.37lb)
Environment	Operating temperature: 0°C to +45°C (+32°F to +113°F) Relative humidity: 10% - 90% @ 40°C, non-considering Operating vibration: 1.0G, 5 - 500Hz, random
Certificate	CE

Packing List

1 x P1177S-881
1 x Driver CD
6 x Panel mount kit

Dimensions



* All specifications and photos are subject to change without notice.

Ordering Information

P1177S-881	17" SXGA slim industrial touch panel computer with LGA1150 socket 4th generation Intel® Core™ i7/i5/i3, Pentium® & Celeron® processor, resistive touch screen and 100 to 240 VAC
------------	--

* Specification and certifications are based on options and may vary.

Optional Accessories

WiFi kit	
82211770060E	VESA & wall mount kit
82211770070E	Rack mount kit
82011750130E	2 x 2.5" HDD bracket
E981604011	ATC10 (VESA arm clamp type)
E981604012	ATW10 (VESA arm wall mount)
E221177116	PPC HA741L black stand (L)
	Power cord (EU/US/UK/JP)

Optional OS Installation

Windows®7/8.1
Windows® Embedded 7/8



▲ Less screw design